



ALFTECH

DIGITAL PROGRAMMABLE TIMER

Users Guide



Important Safety Instructions
Please follow these precautions when using this product:

Read these instructions. Keep these instructions. Heed all warnings. Follow all instructions.

WATER AND MOISTURE: Designed for indoor use only. The product is not protected against liquids. It should not be exposed to dripping or splashing and no objects filled with liquids, shall be placed on the product.

INSTALLATION: The timer must always be installed by qualified service personnel. Install in accordance with the manufacturer's instructions. Always disconnect the supply power before installing the unit. Do not install near any heat sources such as radiators, heaters, or other apparatus that produce heat.

POWER SOURCES: The unit should be connected to a power supply only of the type described in the operating instructions or as marked on the unit.

SERVICING: Contains no user serviceable parts. Do not attempt to repair the product, as this will void the warranty. The DPT-EN3 and external circuitry must only be serviced and maintained by qualified service personnel.

BATTERY: This product contains Nickel Metal Hydride batteries. There is danger of explosion if the battery is incorrectly replaced. Replace only with an equivalent battery as found in the operating instructions. Make sure the battery is installed with the correct polarity. Discard used batteries according to manufacturer's instructions or local environmental protection guidelines.

Product User's Notice

No part of this manual, including the products and software described in it, may be reproduced, transmitted, transcribed, stored in a retrieval system, or translated into any language in any form or by any means, except documentation kept by the purchaser for archiving purposes, without the express permission of Alf Electro-Technical Services CC (ALFTECH).

ALFTECH provides this manual "as is" without a warranty of any kind, either expressed or implied, including but not limited to the implied warranties or conditions of merchantability or fitness for a particular application or purpose. In no event shall ALFTECH, its members, officers, employees and agents, or its suppliers be liable for any damages whatsoever (including, without limitation, damages for loss of profits, business interruption, loss of information) arising out of the use of or inability to use the product, even if ALFTECH has been advised of the possibility of such damages. ALFTECH does not assume any responsibility for any errors that may appear in the product documentation nor any responsibility to support or update the product.

Limited Warranty

No warranty registration is necessary to obtain warranty on ALFTECH products. Please save your proof of purchase receipt. If you do not provide proof of the initial purchase date at the time warranty service is requested, the manufacturing date of the product will be used to determine the warranty period.

1. ALFTECH will repair or replace free of charge, any part or parts of the Product that are defective, but subject to the following conditions:
 - 1.1 Transportation charges on equipment and/or parts submitted for repair or replacement under this warranty must be borne by the Purchaser, Distributor, Re-seller and/or End user;
 - 1.2 The warranty period begins on the date of purchase by the first retail consumer or commercial end user and continues for the period of two (2) years from that date;
 - 1.3 ALFTECH shall have the sole discretion whether to replace or repair the Product, and the replacement Product shall be of equivalent or better specifications, relative to the defective product but need not be identical.
2. The warranty does not extend to repairs required because of:
 - 2.1 Problems caused by parts or systems that do not form an integral part of the Products;
 - 2.2 Equipment control, use, maintenance or installations that are not in accordance with instructions and manuals provided by ALFTECH for the product;
 - 2.3 the product is repaired, modified or altered, unless such repair, modification is authorized in writing by ALFTECH; or
 - 2.4 the product serial number is defaced or missing;
 - 2.5 Normal use which has exhausted the life of the product.
3. ALFTECH does not warrant, guarantee, or make any representations as to the correctness, accuracy, or reliability of the software. ALFTECH does not

warrant that operation of the software and accompanied hardware shall be uninterrupted or error-free, and no warranty that all defects in the software product within or without the scope of ALFTECH's applicable product documentation will be corrected. You are responsible for determining the appropriateness of using the software and accompanied hardware, and assume all risks associated with the use of the software, including but not limited to the risks of program errors, damage to or loss of data, programs, or equipment, and unavailability or interruption of operations. Some jurisdictions do not allow for the exclusion or limitation of implied warranties, so the above limitations or exclusions may not apply to Licensee.

4. This warranty does not extend to any Batteries if installed in the Product;
5. This warranty does not extend to any equipment, installation, assembly or system for which the supplier or installer thereof provides a separate warranty, in which event the End user have to exercise his right and claim against such a supplier or installer in accordance with such a warranty;
6. This warranty does not extent to the installation, setup and configuration of the Product, for which the supplier and/or installer are liable in their respective capacities.
7. The software is provided "as is," without any express or implied warranty of any kind including warranties of merchantability, noninfringement of third-party intellectual property, or fitness for any particular purpose. The entire risk arising out of use or performance of the software remains with licensee.

Products and Corporate names appearing in this manual may or may not be registered trademarks or copyrights of their respective companies, and are only used for identification or explanation and to the owners' benefit, without intent to infringe.

- Windows is a registered trademark of Microsoft Corporation;
- IBM is a registered trademark of International Business Machines;
- Adobe and Acrobat are registered trademarks of Adobe Systems Incorporated;
- Corel is a copyright of Corel Corporation.

This product/publication includes images from CorelDRAW® X3 which are protected by the copyright laws of the U.S., Canada and elsewhere. Used under License.

Specifications and Information contained in this manual are furnished for information only, and are subject to change at any time without notice, and should not be construed as a commitment by ALFTECH. ALFTECH assumes no responsibility or liability for any errors or inaccuracies that may appear in this manual, including the products and the software described in it.

Copyright © 2009 Alf Electro-Technical Services CC. All rights reserved.

Product Name:	DPT-EN3	the DPT Hardware
	DPT-CONSOLE v. 3.3	the DPT Software
Printed:	April, 2009	Product User's Manual

Contact Information

Alf Electro-Technical Services CC t/a ALFTECH

Corporate Headquarters

Address (Physical): 30 Irene Ave., Somerset West, 7130, CAPE, South Africa

Address (Postal): PO Box 1718, Somerset West, 7129, CAPE, South Africa

Telephone: +27-21-852-5221

Fax: +27-21-852-8111

E-Mail: info@alftech.com

Technical Support

Telephone: +27-21-851-7126

Fax: +27-21-852-8111

E-Mail: support@alftech.com

www: www.alftech.com

Users Guide

DIGITAL PROGRAMMABLE TIMER



Alf Electro-Technical Services C.C.
(Reg. No.: CK1999 05574/23)

PO Box 1718
Somerset West
7129, CAPE
South Africa

www.alftech.com

CONTENTS

Introduction	6
DPT-EN3 Digital Programmable Timer	6
DPT-EN3 Operation	7
DPT-CONSOLE	9
Other Options & Features:	10
Creating new DPT Projects	10
Save the new DPT Project	11
Schedule Details	11
Download Project Schedule	13
1. Synchronize Date/Time	14
2. Activation and De-activation	15
Select a Connected DPT	16
Hardware Status Report	17
Synchronize Date/Time	18
Test Output	18
Project Report	19
DPT Time Synchronization	20
Using the DPT_Sync Software	20
DPT_Sync Configuration Dialog	20
Troubleshooting	22

Introduction

Product Overview:

Digital Programmable Timer

DPT-EN3 Digital Programmable Timer

The Digital Programmable Timer can be used in all applications where a device (e.g. Siren, Bell, Relay etc.) must be switched ON at a specific time of day, or week. The DPT-EN3 is designed to be connected permanently to the USB Port on your PC, so as to ensure a consistent supply of power.

If however, the PC is shut down, the DPT-EN3 is battery powered and will remain operational for approximately 7 days. The timer has a single normally-open relay output.

The DPT-EN3 is supplied with DPT-CONSOLE, a Microsoft® Windows based graphical user interface software, which allow the easy creation of scheduled events that activates the DPT-EN3's output relay.

All "scheduled program" data is stored in FLASH memory, and the data cannot be lost if the unit's power is removed. It also has the facility to disable and enable the DPT from the PC. The onboard clock is accurate to ± 2 minutes per year.

the DPT Hardware



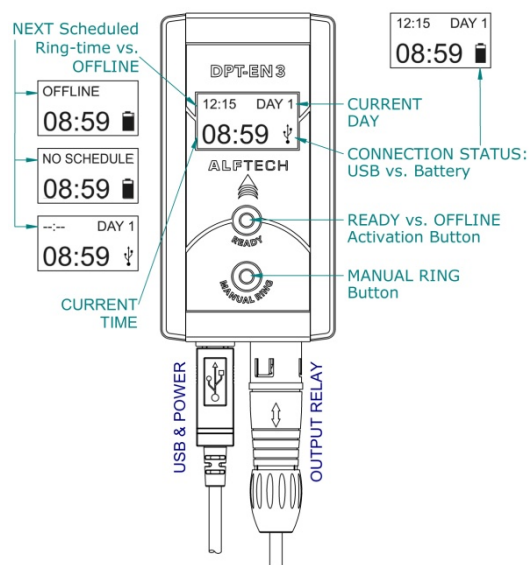
The complete "*DPT-EN3 Installation Manual.pdf*", is found on the accompanied product CD-ROM.

DPT-EN3 Operation

Individual "programmed" schedule entries trigger the system output by switching the output relay ON.

The "READY" button Activates or De-Activates the timer program.

A "Manual Ring" button is provided to allow manual operation at such times that a "schedule program" has not been downloaded or activated.



Reference	Status	Description
READY Button: READY vs. OFFLINE vs. NO SCHEDULE	08:59	READY: The DPT-EN3 automatically displays the next Schedule Ring-time when online, and will activate the Output Relay at the Scheduled Ring-time as indicated.
	OFFLINE	The DPT-EN3 will not activate the Output Relay. Press the READY Button to activate the DPT-EN3 and to run the programmed and downloaded 7-day Schedule. NOTE: If the DPT-EN3 remains OFFLINE when the READY Button is pressed , it indicates that the on-board batteries have run down completely, and the internal clock has reset. Please UPDATE the DPT-EN3's time from the DTP-CONSOLE software application.
	NO SCHEDULE	The DPT-EN3 has not been programmed and No Schedule has been downloaded. Install the accompanied DPT-CONSOLE software onto the connected PC, and RUN the DPT-CONSOLE software to create a new Schedule, and download to program the DPT-EN3.
	--:--	All scheduled Ring-Times have been activated for this day. At 00:00 the following day's Ring-Times will be displayed if so programmed.
CURRENT DAY	DAY 1... DAY 7	The DPT-EN3 automatically displays the current weekday when READY. Day 1 is Monday, Day 7 is Sunday.
CONNECTION STATUS	USB	The DPT-EN3 is connected and powered via the attached USB Cable.
	Battery	The USB Cable is removed, or the attached PC is switched OFF. The DPT-EN3 provides ± 7 days of Battery powered operation. Thereafter, it will automatically return to OFFLINE mode, to conserve power. When re-connected (and powered), it will automatically return to READY mode, and recharge the batteries.
MANUAL RING Button	When Pressed	Will activate the Output Relay as long as pressed.
CURRENT TIME	As Displayed	Display the DPT-EN3 internal clock time. To ensure accurate Output Relay activation, you have to ensure that the DPT-EN3's time is set correctly. The DPT-EN3's internal clock is programmed from the connected PC with the accompanied DPT-CONSOLE software.
USB Connector	Connected	The DPT-EN3 is powered and programmed via the connected USB Cable. Removing the USB cable will interrupt the supply power to the DPT, and its battery will run down.
OUTPUT RELAY	Connected	Connects the DPT-EN3 Output Relay to the external circuit. Removing the OUTPUT RELAY Connection will cause the system not to be activated as Scheduled.

DPT-CONSOLE automatically detects the correct USB Communication port and establishes a connection. A status report offers information on the connected hardware, and the unit's Day / Time setting. It also allows the synchronization of the Date / Time to make sure that the DPT-EN3's onboard clock is synchronized with your PC's current BIOS Date / Time.

An "Activate / De-Activate" Software icon allow you to enable or disable the DPT-EN3 from the connected PC. A "Manual Ring" Button on the DPT-EN3 allows manual activation of the system output.

A USB Connector for the USB port connection to the PC is provided, as well as a Self-Latching Push Pull Connector for the relay output, and a 5.0 m USB cable.

Hardware Features

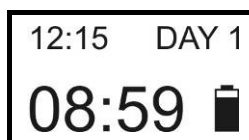
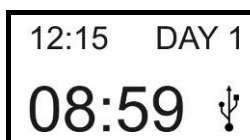
- 120 timers per day
- 7 day week clock
- Clock accurate to ± 2 minutes / year
- Powered and Programmed via USB
- 1 to 55 second Pulsed Output only
- DPT-CONSOLE Software CD-ROM included, with DPT_Sync, a PC/Server Time synchronization software application.

Hardware Connections

- USB to PC (5.0 m Cable included)
- Normally Open relay contact output with Self-Latching Push Pull Connector (Connector Included)

Hardware LCD Indicators

- ACTUAL TIME
- OFFLINE vs. ACTIVE (Displays Next ring-time and Current day)
- POWER STATUS (Battery vs. USB)



DPT-CONSOLE

the DPT Software

The DPT-EN3 Hardware is supplied with DPT-CONSOLE, a Microsoft® Windows based graphical user interface software, which allow easy creation of scheduled events that activates the DPT-Hardware's output relay.

The Schedule Details option allows you to create up to 120 individual events per day, in a 7-day cycle. During this process, you will be able to define all relevant options, such as the Pulse Time duration, and specific times at which the DPT output should be activated.

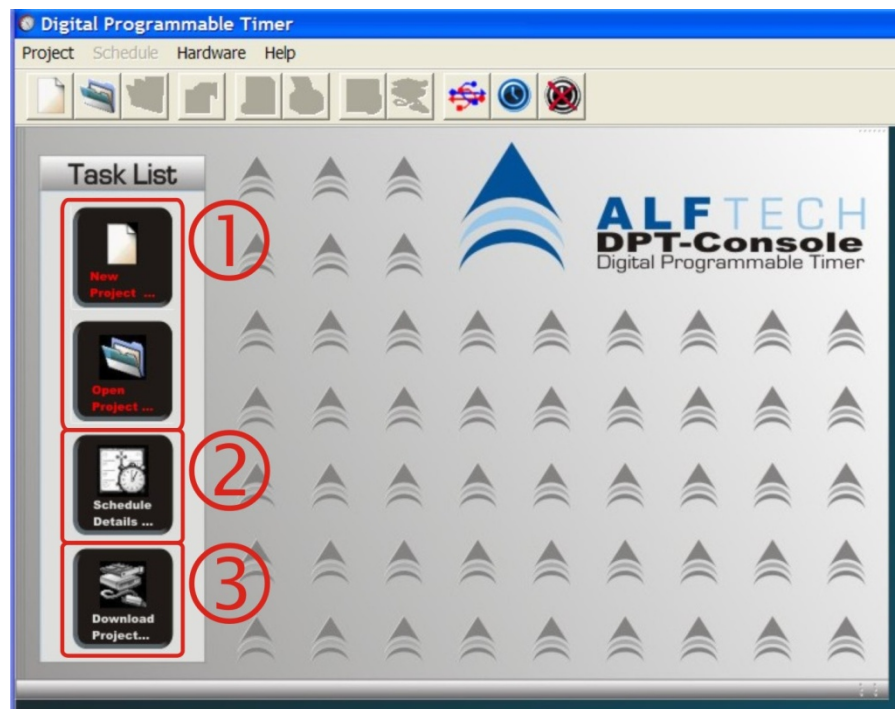


Fig. 1: The primary User Interface (the DPT-CONSOLE Desktop)

Your DPT Hardware can be programmed step-by-step as follows:

STEP ①: Create a new DPT Project file (*.dpt) by selecting the "New Project..." Icon on the DPT-CONSOLE Desktop (Fig. 1 above). Once a Project file has been created, you can always reopen the file to edit and modify the schedule, and configure the hardware again.

STEP ②: Use the "Schedule Details..." Icon to create a detailed Schedule with specific Ring times & days and the Ring duration.

STEP ③: When you are satisfied with the configuration and design of your DPT Project, you will be able to download the project ("Download Project..." Icon) to your DPT Hardware.

NOTE: Any additions or changes made to your project while working within DPT-CONSOLE is ***automatically saved to the DPT Project File.***

Remember: Any changes to the DPT Project File needs to be downloaded to the attached DPT-EN3 to ensure that the timers runs according to your programmed schedule.

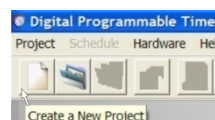
Other Options & Features:

1. DPT-CONSOLE provides options to select the DPT Hardware which is being programmed when you have multiple Timers installed on one computer. You can also provide each attached timer with a unique name, and set the DPT-EN3 LCD contrast if required. (page 24).
2. DPT-CONSOLE provides a Hardware Status report, which detects the installed DPT Hardware (page 25).
3. DPT-CONSOLE provides a printable report which contains all details of the Project as configured, as well as a list of all the configured triggers, their exact details and associated audio files (page 27).

DPT-CONSOLE version 3.3 IS NOT backward compatible with older ALFTECH Digital Programmable Timers, such as the superseded DPT-EN1 and DPT-EN2 Hardware.

Creating new DPT Projects

To create a new DPT project, select "New" from the "Project" menu, or click on the "New" Icon on the DPT-CONSOLE Desktop or Command bar.



The **FIRST STEP** in creating a new DPT Project consists of entering more information into the Project Properties Summary Dialog. If you have multiple DPT-EN3's installed, it is recommended that you select the DPT-EN3 that you wish to create a Project for by clicking the "Select Connected DPT" Icon.

A screenshot of the 'Project Properties Summary' dialog box. It has a blue title bar and a light yellow background. At the top, it says 'Project Properties' and 'Summary'. Below this is a button labeled 'Select Connected DPT'. There are several text input fields: 'Title' (containing '1st Quarter School Schedule'), 'Subject' (containing 'Q1 Schedule'), 'Author' (containing 'Administrator'), 'Manager' (containing 'Dept. Head'), 'Company' (containing 'HST-High'), 'Category' (empty), 'Keywords' (empty), and 'Comments' (containing 'HST-High'). On the right side, there is a 'DPT - Tips!' section with text about selecting a DPT and a 'Please fill in the relevant details as needed' note.

Fig. 2: Project Properties Dialog

Project Title, Subject, Author, Manager, Company, Category, Keywords and Comments:

For your convenience the text details entered allow you to generate a printable report, as a record of the current projects' objectives.

Save the new DPT Project

The **SECOND STEP** allows you to save the new DPT Project, using the standard Windows Save As... Dialog:

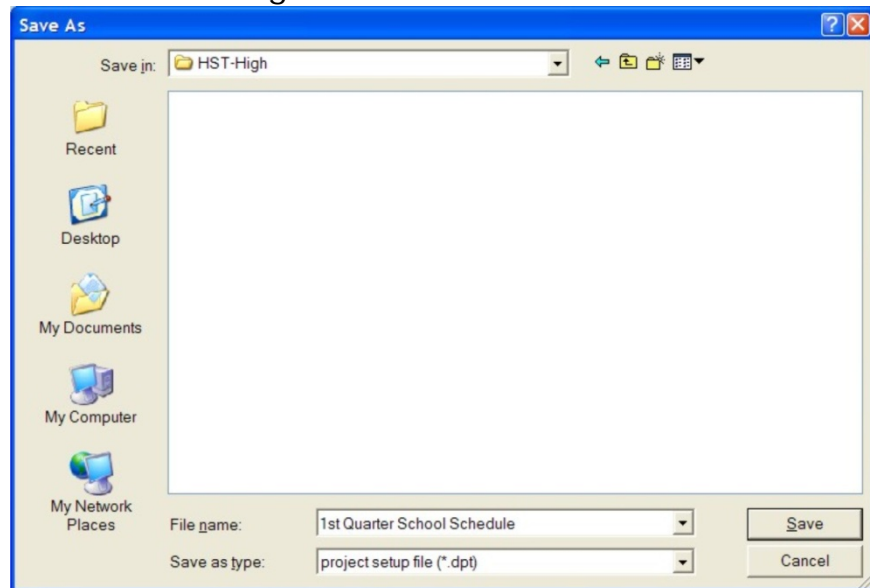


Fig. 3: Windows Save As... Dialog

Alternatively you can type a new or a *different* file name, and then select the Save Icon to complete this process.

You can also Browse to a different folder or network location (Fig. 4), as well as create a new folder before you Save the project (Fig. 5 below).

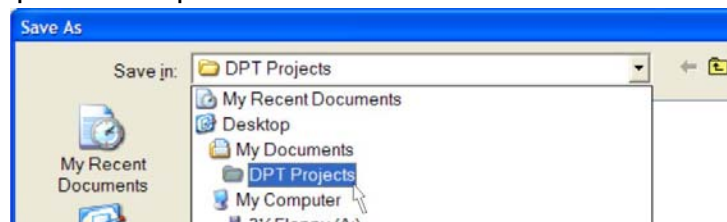


Fig. 4: Browse ...

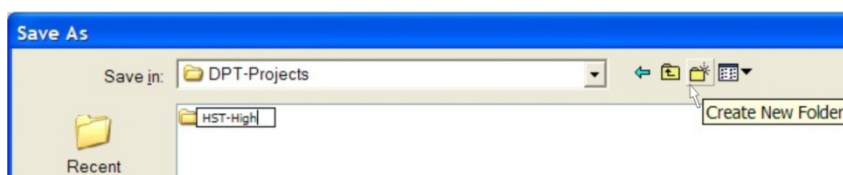


Fig. 5: New Folder ...

Schedule Details

STEP 1: Start by entering an optional *Title* for the timer you are scheduling, followed by selecting the *Pulse Time* – which is the time (duration in seconds) that the output will be activated.



In a school-bell type scenario, this is the length of time for which the school-bell will ring. Enter the ON time, in HOUR:MINUTE e.g. 03:15 will imply 3:15 AM, whereas 15:15 will mean 3:15 PM, with a ± 1 second accuracy.

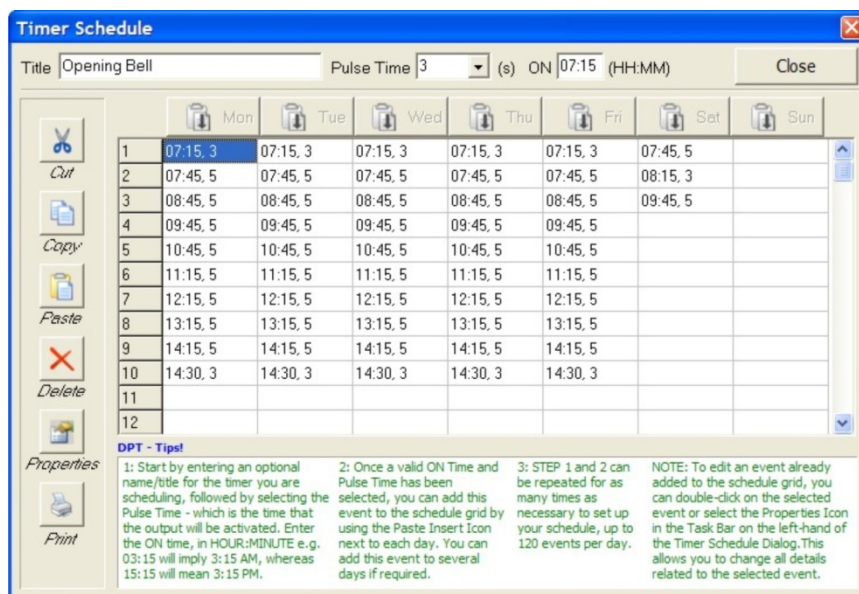


Fig. 6: Timer Schedule Details Dialog

STEP 2: Once a valid *ON Time* and *Pulse Time* have been selected, you can add this event to the schedule grid by using the *Paste Insert Icon*. You can add this event to several day(s) if required by clicking on the appropriate *Paste Insert* icon for the day(s) you would like to apply the scheduled activation.



STEP 3: STEPS 1 and 2 can be repeated as many times as necessary to set up your schedule, up to 120 events per day.

TIPS: To edit or change an event already added to the schedule grid, you can double-click on the selected event or select the *Properties Icon* in the Task Bar on the left-hand of the Timer Schedule Dialog. This allows you to change all details related to the selected event.



The *Cut*, *Copy*, *Paste*, *Delete* Icons on the Task Bar operate in conventional Microsoft Windows fashion. By vertically dragging across multiple cells in a specific day, you can *Copy and Paste* your multiple selections to any other day, provided that the target day does not already have a trigger configured for a similar time. The *Print* Icon allows you to create a print-out of your timer schedule.

STEP 4: Selecting CLOSE > will allow you to return to the DPT-CONSOLE Desktop and continue with the next step, downloading the Timer Schedule to the DPT Hardware.

Download Project Schedule

Once a project has been configured, it needs to be downloaded onto your DPT Hardware. Select the "*Compile and Download*" Icon to download the current Projects' schedule timer with events to the connected DPT Hardware.

NOTE: If the DPT is not connected, or the connection via the PC's USB Connection is not configured (or fails) a message "Could not Establish a Connection ..." will be displayed in the Status Report. DPT-Console automatically detects the correct USB Communication port and establishes a connection. Please make sure that the DPT is securely connected to the PC at both ends of the USB Cable, and that the correct DPT-EN3 has been selected for programming (if multiple DPT-EN3's are connected).

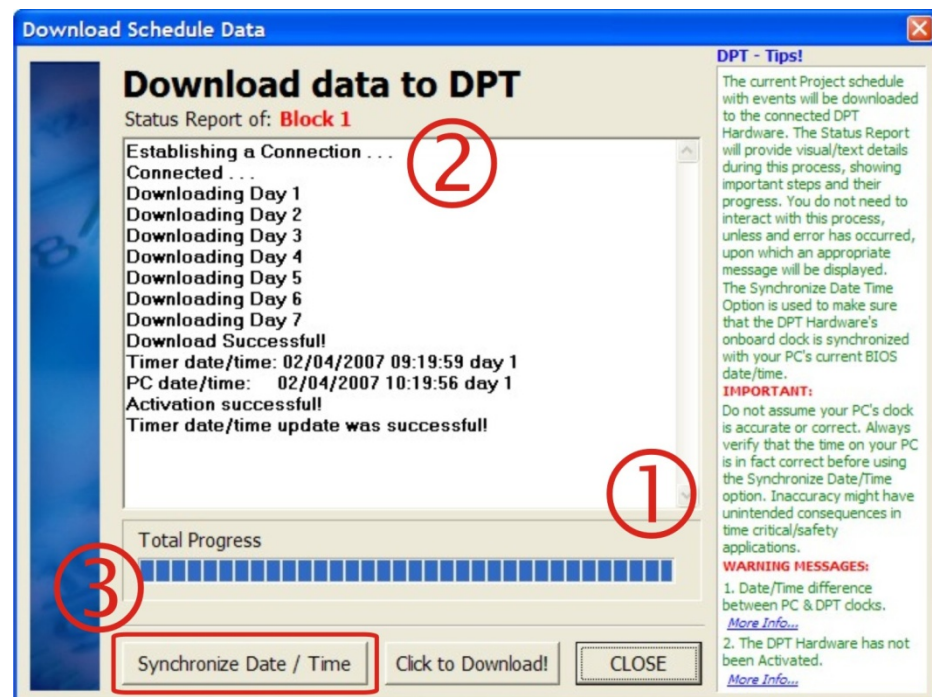


Fig. 7: Compile and Download Dialog

Upon download, the download progress ① will be displayed, and the status report window ② will show relevant progress messages. The Status Report will provide visual/text details during this process, showing the most important steps and their progress. You do not need to interact with this process, unless an error has occurred, upon which an appropriate message will be displayed.

TIP: A successful download might be followed by two messages as illustrated on the following page:

1. A message showing that the PC and the DPT's internal clocks differ with more than one minute, which might have important implications in obtaining accurate (timely) results from the DPT schedule.
2. A message showing that the DPT is not Activated, i.e. the schedule has been downloaded, but the unit still needs to know that your intention is to proceed with running the downloaded schedule. This option is provided to allow manual overriding of the DPT schedule in scenarios where the schedule has to be changed or ignored for a period of time i.e. when De-activated, the DPT will not activate its output relay according to the downloaded schedule.

1. Synchronize Date/Time

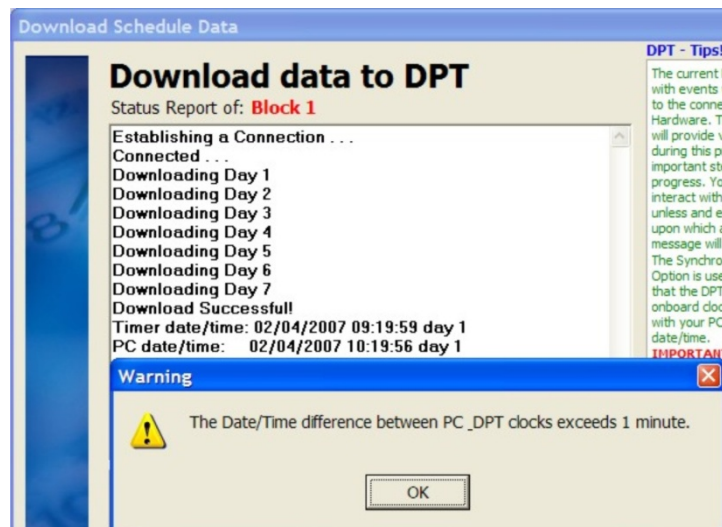


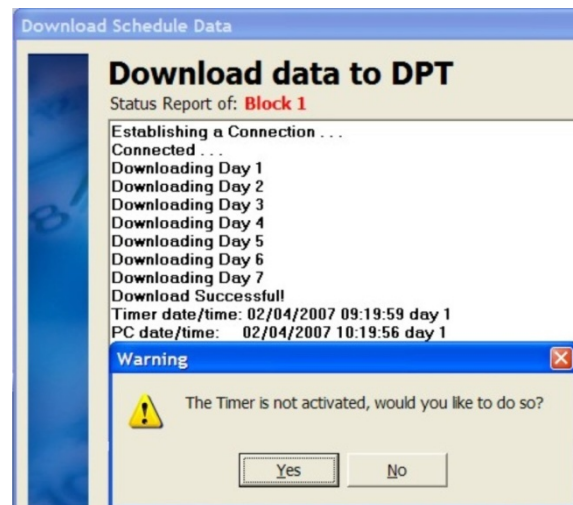
Fig. 8: The Date/Time Difference Warning Dialog

When the timer date/time and PC date/time differ, you will need to synchronize the systems. The *Synchronize Date/Time* option ③ will synchronize the DPT Hardware's time with the time of your PC's BIOS. This will ensure that the DPT Hardware's onboard clock is synchronized with your PC's current BIOS date/time.

IMPORTANT:

Do not assume your PC's clock is accurate or correct. Always verify that the time on your PC is in fact correct before using the Synchronize Date/Time option. Inaccuracy might have unintended consequences in time critical/safety applications.

2. Activation and De-activation



By default, the DPT unit is not activated, even if a schedule has been downloaded. As shown above, a message will indicate this state, and allow you to activate the DPT. In scenarios where you don't need the DPT's functionality, i.e. holidays, special days you thus have the option to De-activate the DPT for such a period of time. The DPT-CONSOLE Desktop provides two Icons on its toolbar to allow manual activation and de-activation when required.

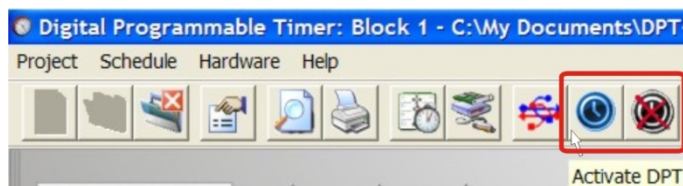
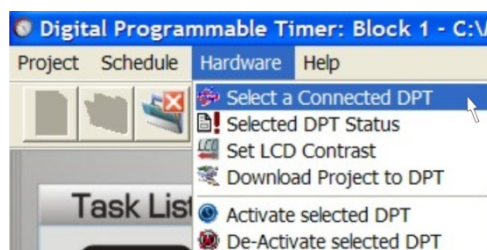


Fig. 9: DPT – Hardware Activation / Deactivation Icons

Select a Connected DPT

DPT-CONSOLE allows you to program several attached DPT-EN3's. In order to "target" a specific DPT, select the Hardware menu, and Select a Connected DPT Option.



The highlighted DPT-EN3 illustrated below is the "target" DPT. Any Project Schedules downloaded will download to the DPT-EN3 "highlighted" in this table.

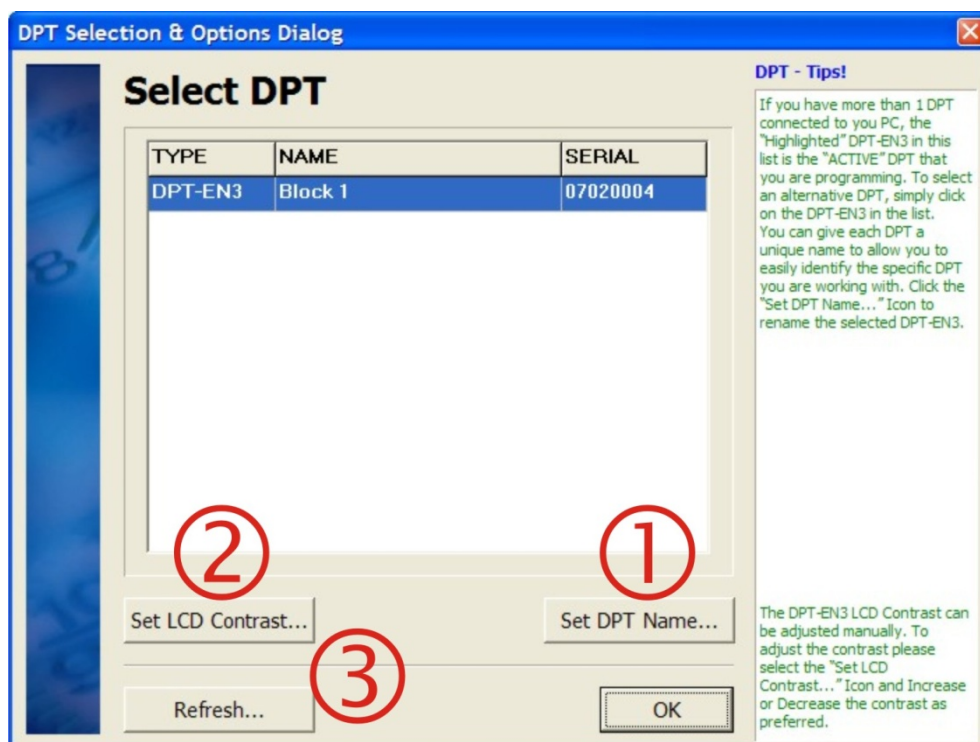
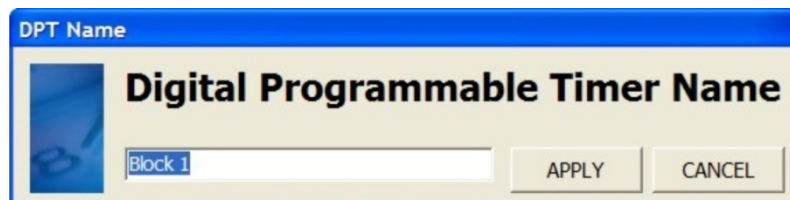
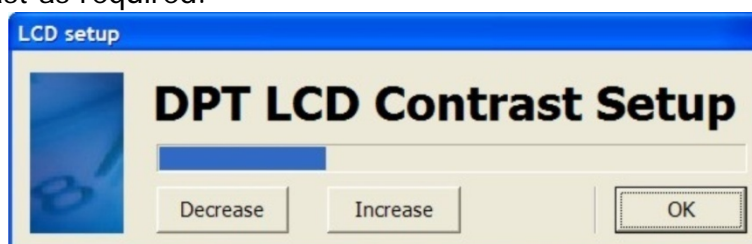


Fig. 10: Hardware Interface Setup Dialog

- ① To rename the DPT, select the *Set DPT Name...* Icon.



- ② To set the LCD Contrast if you lighting environment provides unacceptable DPT-EN3 LCD display clarity. Select the *Set LCD Contrast...* Icon. And adjust the LCD contrast as required.

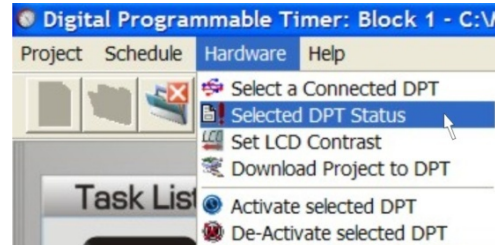


- ③ If need be, you can select the *Refresh...* Icon to force Microsoft Windows to update the DPT-EN3 listing.

Hardware Status Report

The Hardware Status can be accessed from the Hardware Menu, select *Selected DPT Status* from the list.

DPT-CONSOLE communicates with the connected DPT Hardware to retrieve the system status as stored on the DPT Hardware.



NOTE:

If the DPT is not connected, or the connection via the PC's USB Connection is not configured (or fails) a message "Could not Establish a Connection ..." will be displayed in the Status Report. DPT-CONSOLE automatically detects the correct USB Communication port and establishes a connection. Please make sure that the DPT is securely connected to the PC at both ends of the USB Cable, and that the correct DPT-EN3 has been selected for programming (if multiple DPT-EN3's are connected).

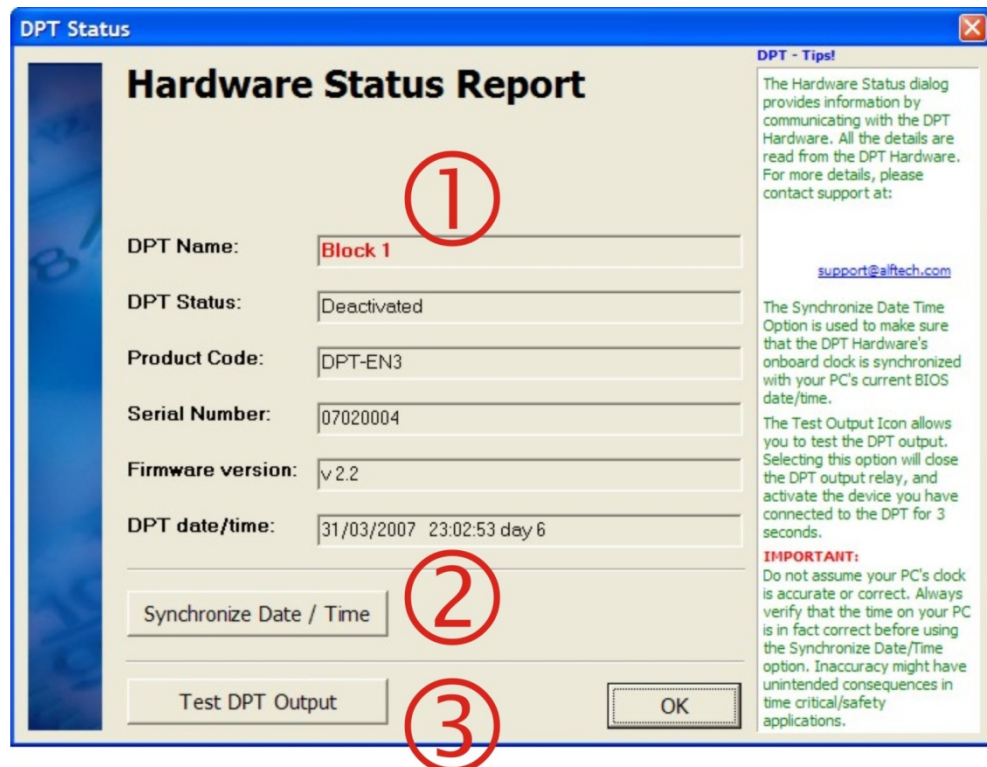


Fig. 11: Status Dialog

The DPT Name ① for which the Hardware Status report is generated is shown.

Synchronize Date/Time

The *Synchronize Date/Time* option ② will synchronize the DPT Hardware's time with the time of your PC's BIOS. This will make sure that the DPT Hardware's onboard clock is synchronized with your PC's current BIOS date/time.



IMPORTANT:

Do not assume your PC's clock is accurate or correct. Always verify that the time on your PC is in fact correct before using the *Synchronize Date/Time* option. Inaccuracy might have unintended consequences in time critical/safety applications.

Test Output

Selecting the *Test Output* ③ option will close the DPT output relay, and activate whatever device you have connected to the DPT for 3 seconds.

Project Report

A Printable Project Report can be activated from the  Print Preview Icon as shown here. Selecting the  Print Icon, DPT-CONSOLE will automatically print the Report to your default windows printer.

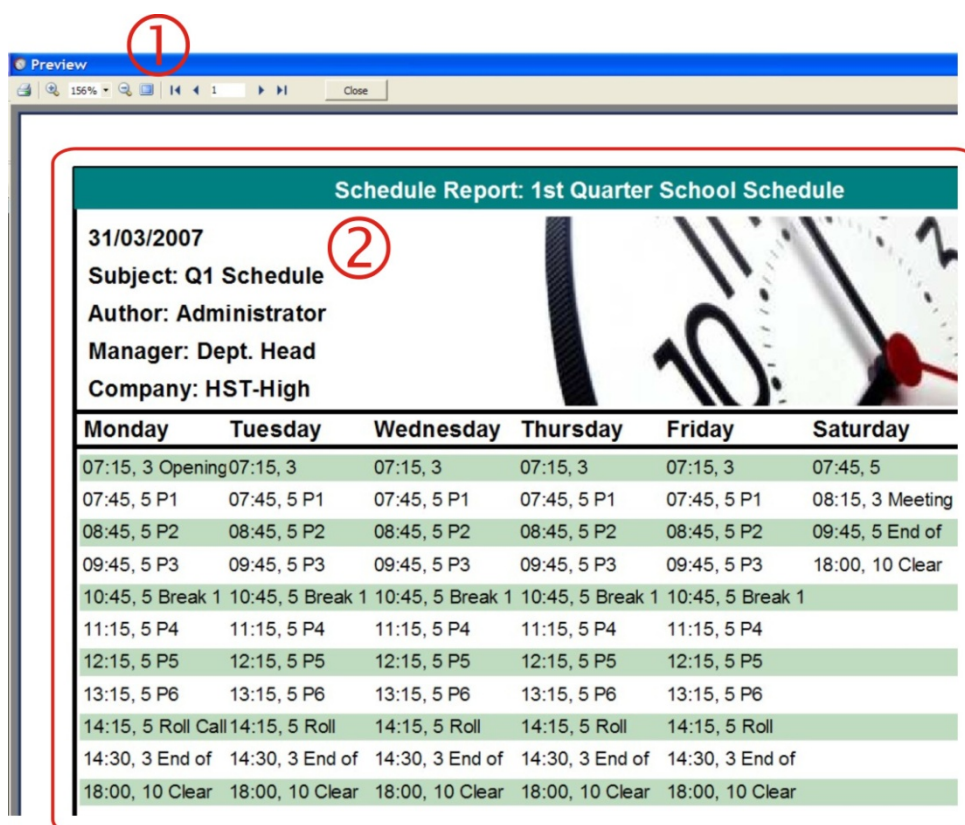
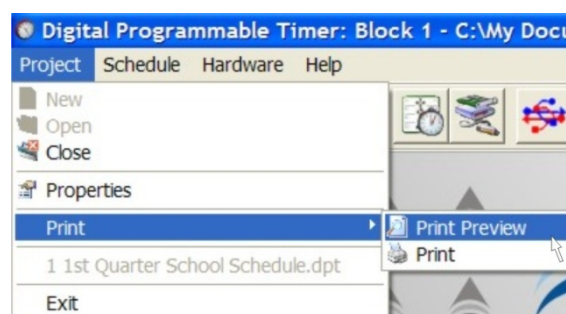


Fig. 12: Project Report Print Preview

The Project Report preview allows you to see the report before printing. The Print Preview Dialog provides ① basic functionality for viewing multiple pages as well as your printer settings and other relevant features.

All the details in the report ② are extracted from your comments in the Project Summary Dialog, as well as the settings chosen, comments and scheduled events as configured.

DPT Time Synchronization

Using the DPT_Sync Software

An additional software component, DPT_Sync.exe can be installed to automatically update the DPT's internal clock from the attached PC.

NOTE: The DPT's internal clock is accurate to ± 2 minutes per year, whereas an average PC's internal clock is **ONLY** accurate to ± 2 minutes PER WEEK! Do not install this software if the DPT is connected to a PC that is not automatically kept up to date from an external source (such as a network Server).

The DPT_Sync.exe software application is thus **only used** where the attached **PC's time is regularly updated** from a Server and/or it in itself is updated regularly from an Internationally Accredited world time clock/server. Due to USB timing delays (and other processes running on the PC), the DPT and PC's clock may differ by up to 3 seconds when synchronized.

Once the DPT_Sync.exe software application is running, it will automatically search for an attached DPT(s) and allow you to configure the DPT Synchronization schedule as required.



A DPT_Sync Tray Icon will also be permanently installed in the Windows Taskbar tray. DPT_Sync will start automatically when Windows starts, and remains active unless UnInstalled by the end-user.



DPT_Sync Configuration Dialog

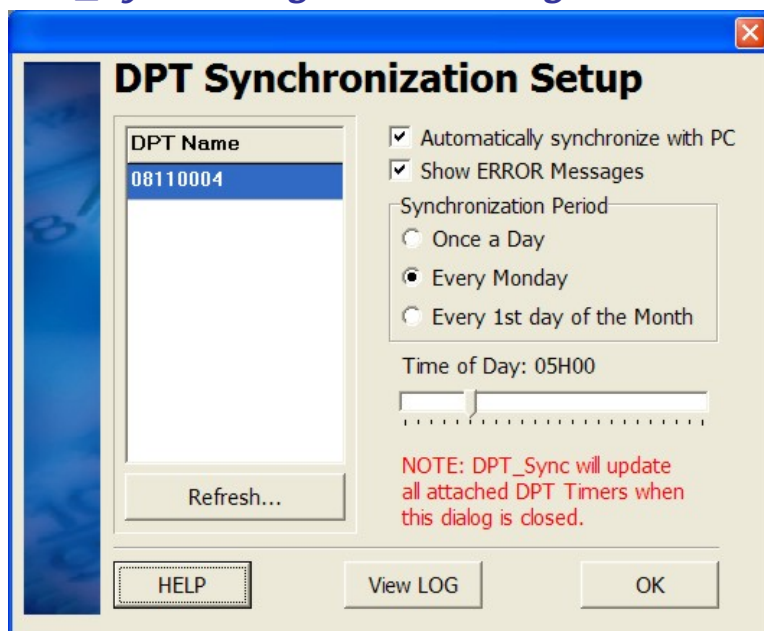
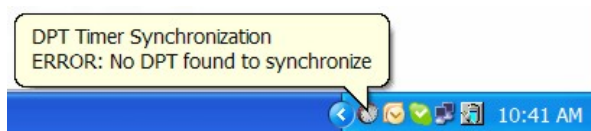


Figure 13: The DPT Synchronization Setup Dialog

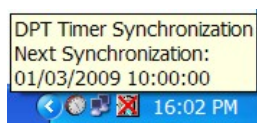
Features:

1. Enable/Disable automatic Synchronization. Even when not "Enabled" the DPT_Sync software application will remain active and accessible from the Windows system tray. When disabled, it will not attempt to synchronize any attached DPT's.

2. Show/Hide ERROR Messages:
This will create a "pop-up" message when an ERROR has occurred, e.g.:



3. Synchronization Period offer three options as illustrated, Once a Day, Every Monday, and Every 1st day of the Month, as well as a slider button that allows one to adjust/select the exact time when an synchronization attempt is scheduled to occur (in hours).



4. The Help Icon will open the DPT_Sync Help file.
5. The View LOG Icon will open the *DPT Sync Log File.txt* in Notepad. This file is located in your pre-selected DPT-CONSOLE Software installation folder, typically: *C:\Program Files\DPT-Console*
It logs all events such as the date/time, as well as the name of the connected DPT(s) which was synchronized.

The following is an example of such a Log File output:

```
Synchronization attempted on: 28/02/2009 10:00:06
ERROR: No ALFTECH DPT was found

Synchronization attempted on: 28/02/2009 16:00:22
ERROR: No ALFTECH DPT was found

Synchronization completed on: 01/03/2009 01:58:44
SUCCESS: DPT-EN3 08110004

Synchronization completed on: 01/03/2009 01:59:30
SUCCESS: DPT-EN3 08110004

Synchronization completed on: 02/03/2009 05:00:07
SUCCESS: DPT-EN3 08110004
```

6. The left-hand pane in the illustrated dialog lists NO connected DPT's. When no DPT's are present, or none are detected the list will appear empty as illustrated. Other warnings Dialogs and pop-ups will also warn the end-user of a potentially serious condition.

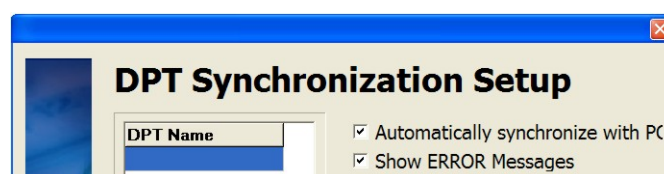


Figure 14: The DPT Synchronization Setup Dialog, illustrating NO connected DPT's

7. Refresh Icon: When multiple DPT's are connected, the refresh Icon will poll all available USB ports and list all the DPT's as found.

Troubleshooting

For uninterrupted operation, ensure that the USB & OUTPUT RELAY Connectors are securely inserted. The DPT-EN3 is powered by the attached USB cable.


DPT-CONSOLE is unable to detect the connected DPT Hardware

Probable Cause:

1. Make sure that the DPT Hardware is powered by ensuring that the USB Cable is connected securely at both ends, and the USB Icon  is displayed on the DPT-EN3 LCD.
2. Ensure that the USB Driver Software is installed.

The LCD display is BLANK

Probable Cause:

1. The DPT-EN3 is not powered.
FIX: Make sure that the USB Connector is securely inserted,  and that the PC it is connected to is switched ON. The USB Icon will be displayed.
2. Alternatively, the on-board batteries might have failed.
FIX: The hardware needs to be removed and a new battery inserted (requires soldering). After replacing the battery, connect the DPT hardware to your PC and re-synchronize the Date / Time using DPT-CONSOLE. The Batteries needs to be recharged for a minimum of 2 days if they are new, or have been depleted completely.
3. When first installed and connected, the onboard batteries might be totally discharged.
FIX: The attached powered USB Cable will supply sufficient energy to charge the batteries, and the display will be powered within a few minutes.

The DPT-EN3 remains OFFLINE when the READY Activation Button is pressed

Probable Cause:

- 1: The on-board batteries have run down completely, and the internal clock has reset. The Batteries needs to be recharged for a minimum of 2 days if they are new, or have been depleted completely.
FIX: To Activate the programmed Schedule, you will need to UPDATE the DPT-EN3's time from the DTP-CONSOLE software application.

**The System is activated at the wrong time,
i.e. the alarm/bell "plays" at the wrong time**

Probable Cause:

1. Please check if the CURRENT TIME shown on the LCD display is the correct time, and that the correct CURRENT DAY is displayed.

FIX: To RESET the DPT-EN3's time, Run the DPT-CONSOLE software and select the Hardware Menu, and Selected DPT Status. Click the "Synchronize Date / Time" Icon to update the DPT-EN3 and synchronize the DPT Hardware's Date / Time with the date/time of the connected PC's BIOS.

NOTE: If the connected PC's Date / Time are incorrect, the DPT-EN3 will be programmed INCORRECTLY as well.

**The DPT – Hardware's time is different than
your PC's displayed time**

Probable Cause:

1. The time has not yet been synchronized.

FIX: In DPT-CONSOLE, open the Hardware Menu, and click on *Selected DPT Status*. Click on the "Synchronize Date / Time" Icon to set the DPT hardware's time.

ALSO: Do not assume your PC's clock is accurate or correct. Always verify that the time on your PC is in fact correct before using the Synchronize Date/Time option. **Inaccuracy might have unintended consequences in time critical applications.**

2. The DPT Hardware's onboard battery might have failed.
NOTE: This failure will reveal itself after you have initially synchronized the Date / Time, and notice that subsequently the displayed Date / Time differs.

FIX: The hardware needs to be removed and a new battery inserted (requires soldering). After replacing the battery, connect the DPT hardware to your PC and re-synchronize the Date / Time.

ALSO: If the batteries have run down completely, and the DPT-EN3 is powered again via the attached USB Cable, the DPT-EN3 will restart at 00:00. The Batteries needs to be recharged for a minimum of 2 days if they are new, or have been depleted completely.

The Programmed Schedule is not running

Probable Cause:

1: The DPT-EN3 is OFFLINE.

FIX: Ensure that the DPT-EN3 is ONLINE by pressing the READY Button. The NEXT Scheduled Ring-time will be displayed as indicated.

ALSO: If the DPT-EN3 is ONLINE and the system do not activate as programmed, please check and ensure that the OUTPUT RELAY Connector is securely inserted.

NOTES

[illegible]